

THE
Meadows
CLIFTON PARK

LEXINGTON II



Not actual home. May be shown with upgrades.

2440 SF | 4 BR | 2.5 BA



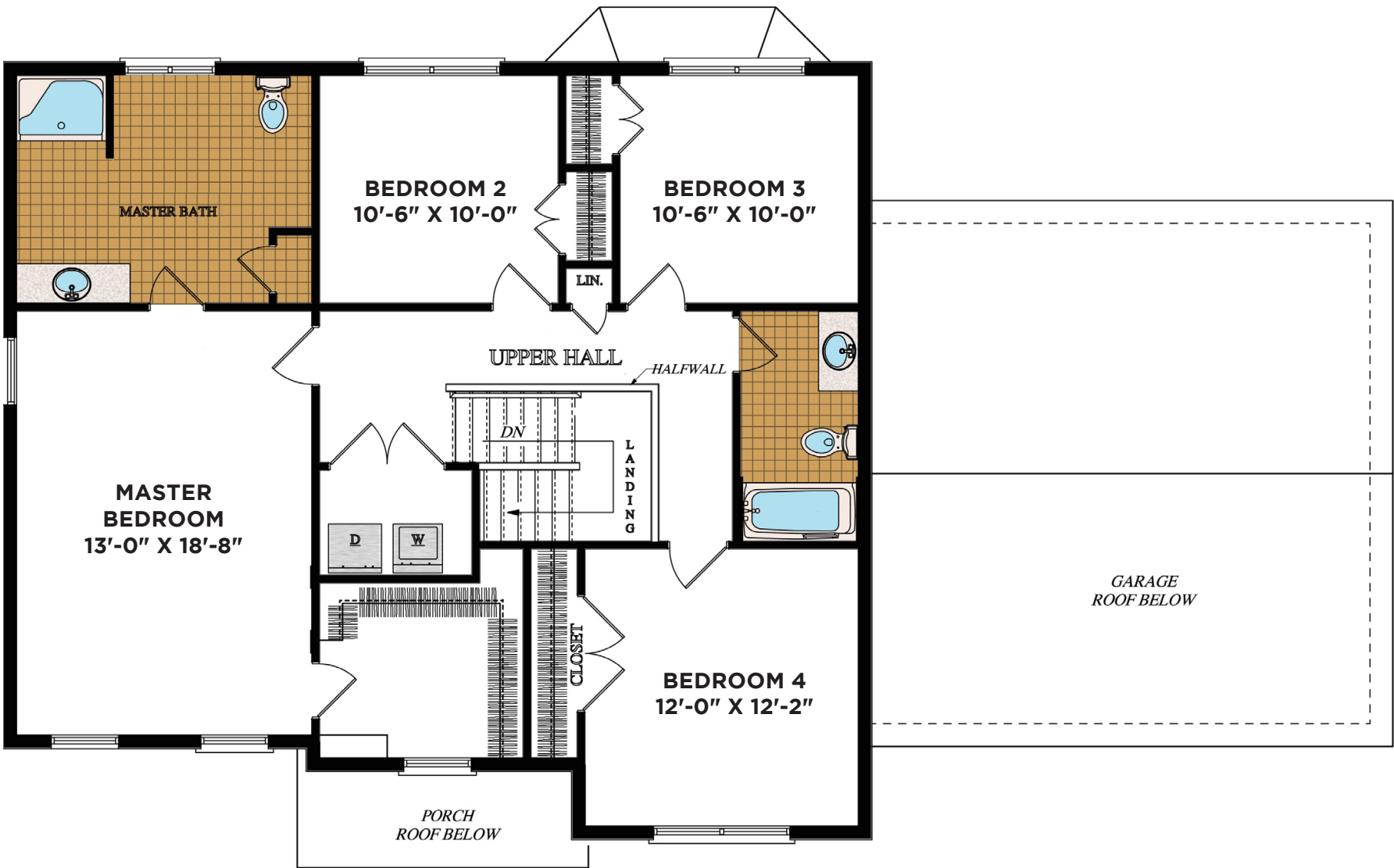
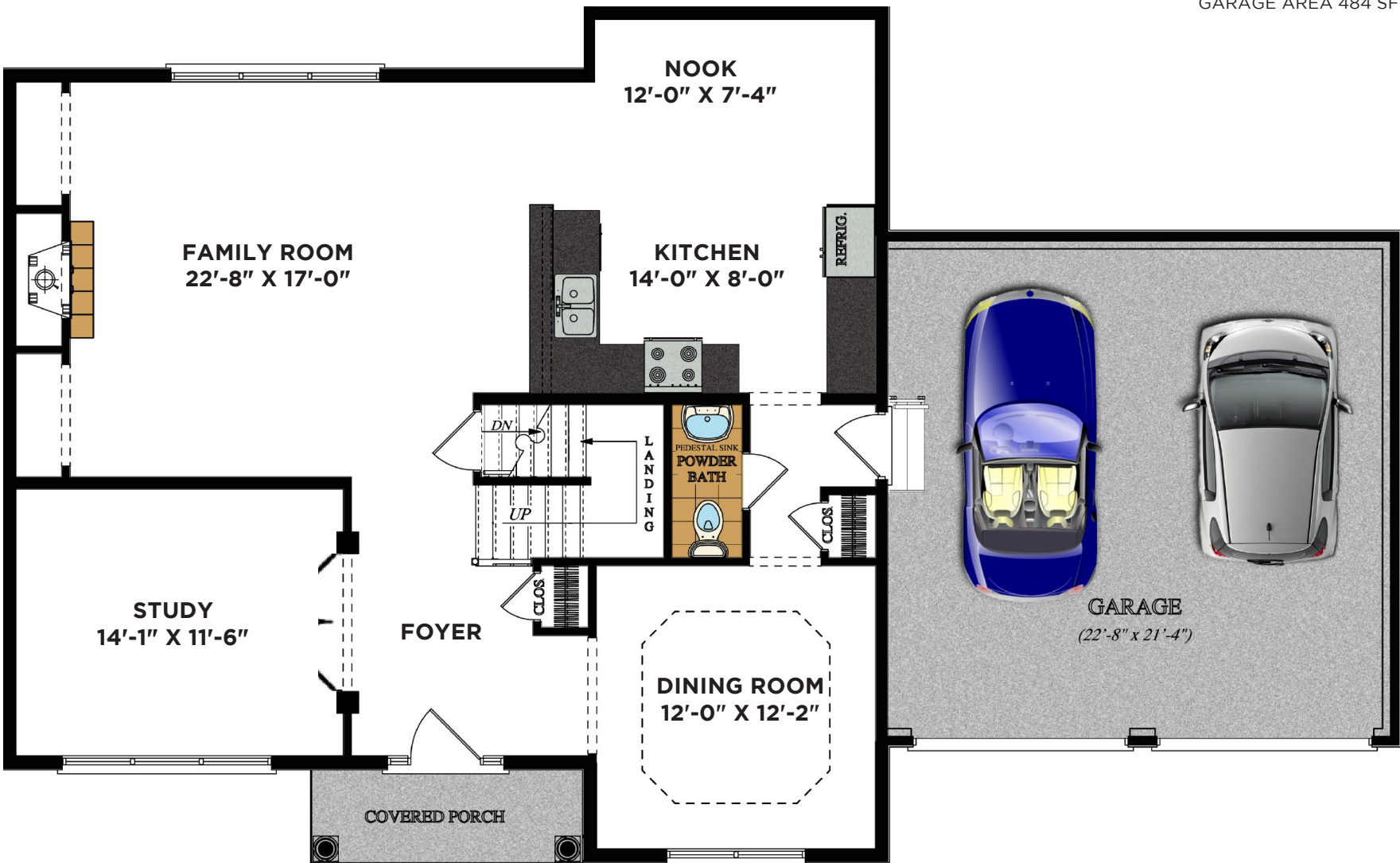
Vin Pillai

Lic. Real Estate Salesperson **(518) 330-7231**

E. vin@realtyalbany.com



FIRST FLOOR 1218 SF
SECOND FLOOR 1222 SF
GARAGE AREA 484 SF



Room dimensions are approximate and subject to change. Information deemed reliable but not guaranteed.